

METAVIEW SIP PROVISIONING SERVER



IP OFFICE PHONES AND OTHER SIP-BASED COMMUNICATION DEVICES OFFER UNPARALLELED FLEXIBILITY AND VALUE. HOWEVER, BROAD ADOPTION CREATES SIGNIFICANT PROVISIONING AND SUPPORT CHALLENGES FOR SERVICE PROVIDERS, RESELLERS, ENTERPRISE ADMINISTRATORS AND END USERS.

MetaView SIP Provisioning Server addresses these challenges with a new multi-tiered approach that

- streamlines provisioning, enabling simpler, more cost-effective and scalable operations via your MetaView Network Management System client and optional barcode scanner (for device MAC address scanning)
- simplifies phone management for your enterprise customer administrators via CommPortal Web
- integrates user-friendly phone configurations for end users, also via CommPortal Web.

SIP Provisioning Server comprises both network management (MetaView SIP Provisioning Server) and the end user interface (CommPortal Phone Configurator).

KEY TO A SUCCESSFUL VOIP DEPLOYMENT

The key to a successful deployment of SIP devices, the SIP Provisioning Server enables service providers to

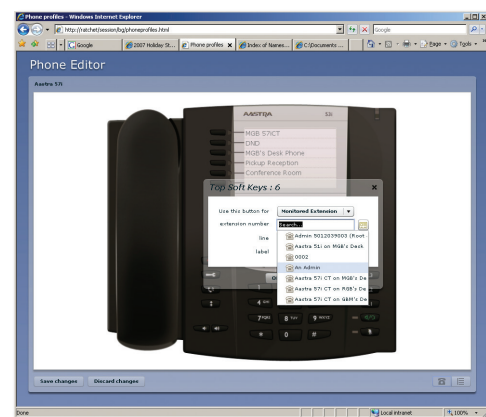
- set up phones extremely rapidly, and with no duplication of existing provisioning data, affording end users plug-and-play functionality
- reduce costs by eliminating engineer involvement with enterprise installations of individual telephones (either on-site, or over the phone)
- deliver a robust end-to-end solution by rolling out automatic phone firmware updates
- prevent end users from inadvertently changing important settings
- delegate the day-to-day administration of most phone features and settings to SMB employees (administrators or end users) through a powerful but intuitive web interface
- easily deploy Hosted PBX services, without having to manually configure SIP business phone handsets
- simplify roll-out and support of advanced phone features
- create a tiered service offering, allowing both low cost basic packages and premium options for more demanding customers.

RESELLER INTERFACE

Your ability to effectively leverage resellers can greatly enhance the success of your VoIP service. The SIP Provisioning Server enables you to rapidly scale up an effective reseller-based business offering. A streamlined workflow between you and your resellers ensures accuracy and reduces duplication of work. The reseller Interface allows resellers to

- add new phones (by supplying MAC address and phone model information)
- assign phones to a business group (by entering the business group name), or to an end user (by entering the end user's directory number)
- delete phones.

Even greater speed and accuracy is available through an integrated barcode scanner.



Easily configure phone features from within CommPortal Web.

METAVIEW SIP PROVISIONING SERVER SPECIFICATIONS

SERVICE PROVIDER FEATURES

SIP PROVISIONING SERVER HARDWARE

- Requires the deployment of both MetaView (for SIP Provisioning Server) and MetaSphere (for CommPortal Phone Configurator); hardware options for each are addressed in their respective brochures

MANAGEMENT

- Service provider log-in supported
- Integrated with MetaView Explorer & Web (clients)

SYSTEM CONFIGURATION OPTIONS

- Web UI session timeout
- Cache expiry

SECURITY

- RSA encryption between servers
- Authentication certificates: X.509
- Validation: ITU-T X.690
- MetaView Client identity validation
- Craft script access via SSH
- Access for customization/branding via Secure FTP

SERVICE PROVIDER CONFIGURATION OPTIONS

- MetaView Explorer and Web clients support global view of all SIP phones deployed; grouped by customer network; tagged by MAC address and short name
- Master level control of all enterprise administrator and individual end user options
- Master level of permissions for lock down / hide settings
- Language Support: US English, Spanish, Canadian French

OPTIONAL BARCODE SCANNER

- For accelerated device registration
- Supports any standard USB(HID) or PS/2 barcode scanner, fixed or handheld, laser or CCD, capable of being configured to append a "tab" character to the end of each barcode string

RESELLER INTERFACE

WEB-BASED INTERFACE

- Allows limited, secured access to service-provider-specified, configuration fields in MetaView NMS
- Streamlined workflow between service providers and their resellers ensures accuracy and reduces duplication of work

RESELLER CONFIGURATION OPTIONS

- Add new phones (by MAC address and phone model)
- Assign phones to a business group (by entering the business group name), or to an end user (by entering the end user's directory number)
- Delete phones
- Optional barcode scanner as for service provider

ENTERPRISE ADMINISTRATOR INTERFACE

CONFIGURATION OPTIONS

- Multiple tier administration: entire business group or department administrator
- Modify all individual end user configurations
- Template creation for different phone model configurations
- Lock down / hide specific settings (preventing user changes)
- Barcode scanner for accelerated device registration

END USER FEATURES

CLIENT STANDARDS

- HTML, Adobe Flash, JavaScript, JSON, CSS 2.1

SUPPORTED CLIENTS

- Internet Explorer 6, 7 or 8; Firefox 2, 3

SECURITY

- Secure HTTP log-in through CommPortal
- Log-in with directory number and password

END USER CONFIGURATION OPTIONS

- Provision soft keys
- Backlight settings
- Hands-free calls default: to the speaker, or a headset
- Speed-dial-and-conference: allowing a pre-defined party to be conferenced in with a single keypress (supported Aastra models only)
- Assign one-key access to frequently used call services: Speed Dial, Do Not Disturb, Monitored Extension, Park Call, Retrieve Parked Call, Automatic Recall, Call List, Directory, Intercom, Voicemail, Last Caller ID Erasure, Line Identity, Trace Call, Group Pickup, Directed Pickup
- Integrated with CommPortal contacts for simple drop-down menu assignment
- Will vary depending on device

SUPPORTED DEVICES

AASTRA PHONES

- Aastra 6751i, Aastra 6753i, Aastra 6755i, Aastra 6757i, Aastra 6757i CT, Aastra 6731i, Aastra 6730i, 6731i, 6739i, 536M Expansion Module, 560M Expansion Module

POLYCOM

- Polycom Soundpoint IP 335, IP 550, IP 601, IP 650, IP 570, IP 4000, IP 5000, Polycom Expansion Module

SNOM

- Snom 300, Snom 320, Snom 360, Snom 370, Snom Expansion Module

CISCO

- Cisco SPA504G, Cisco SPA509G, Cisco SPA525G, Cisco SPA2102 ATA

Other models added on a regular basis.